

Stitches: 42710
 Colors: 6
 Color changes: 9
 Stops: 10

Machine: Tajima
 Trims: 12

Left: 62.0 mm
 Right: 62.0 mm
 Up: 62.3 mm
 Down: 62.0 mm

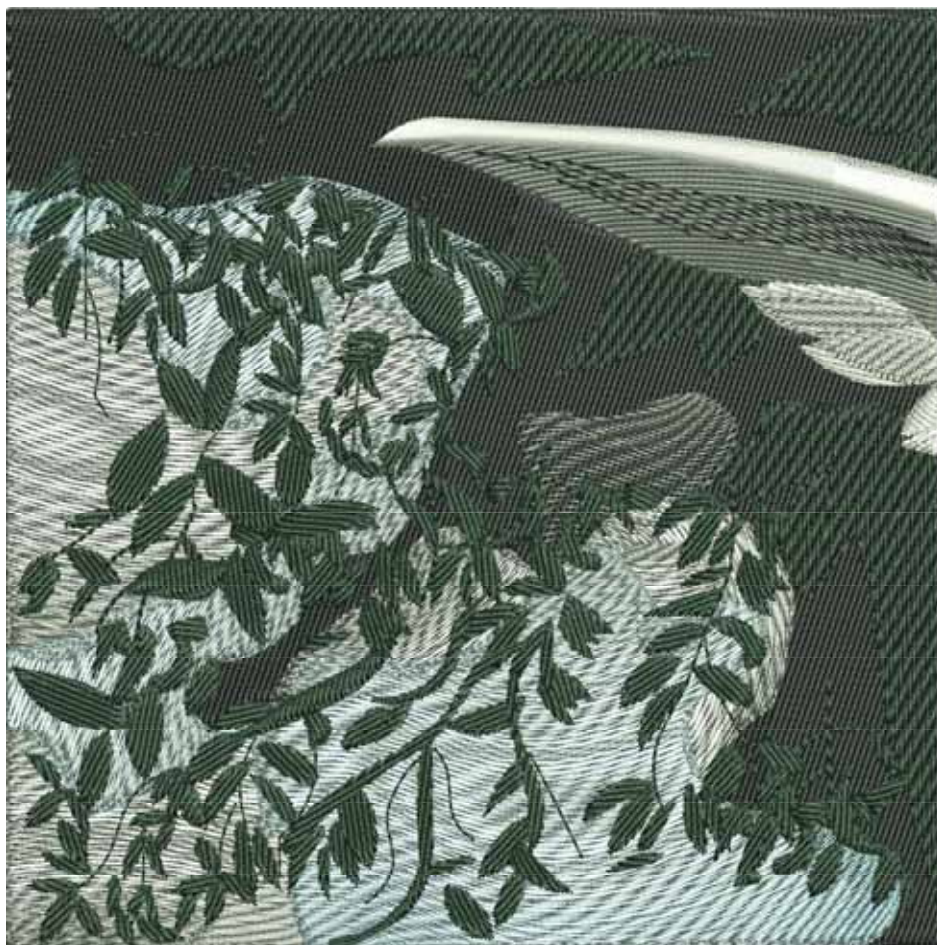
EndX: 0.00 in
 EndY: 0.00 in


Max Stitch: 10.6 mm
 Min Stitch: 0.0 mm
 Max Jump: 6.9 mm

Color Sequence:

#	St.	Descr	Code
1.	11427	Black	227
2.	2875	Dk Granite	396
3.	5611	Med. Pewter	389
4.	2951	Colonial Blue	445
5.	16557	Pine Green	239
6.	872	White	226
7.	296	Med. Pewter	389
8.	1289	Dk Granite	396
9.	360	Black	227
10.	470	White	226

7. Black250.47ft
 19. Dk Granite 78.99ft
 14. Med. Pewter108.96ft
 21. Colonial Blue 56.33ft
 23. Pine Green257.84ft
 6. White 22.93ft
 Total Bobbin: 293.49ft



	Filename :	BFC669-13.E	Stitches:	42710	Max Stitch:	10.6 mm	Design Ref :
	Date:	9 Dec, 2007	Colors:	6	Min Stitch:	0.0 mm	Date:
	Printed:	10 Dec, 2007	Color changes:	9	Max Jump:	6.9 mm	Customer :
	H:	4.89 in	Stops:	10	Total Bobbin:	293.49ft	Required By :
	W:	4.88 in	Left:	62.0 mm			
			Right:	62.0 mm			
			Up:	62.3 mm			
			Down:	62.0 mm			
			EndX:	0.00 in			
			EndY:	0.00 in			

Colorway		Colorway 1
Fabric Color		
Stop	Stitches	
1	11427	227 Black
2	2875	396 Dk Granite
3	5611	389 Med. Pewter
4	2951	445 Colonial Blue
5	16557	239 Pine Green
6	872	226 White
7	296	389 Med. Pewter
8	1289	396 Dk Granite
9	360	227 Black
10	470	226 White