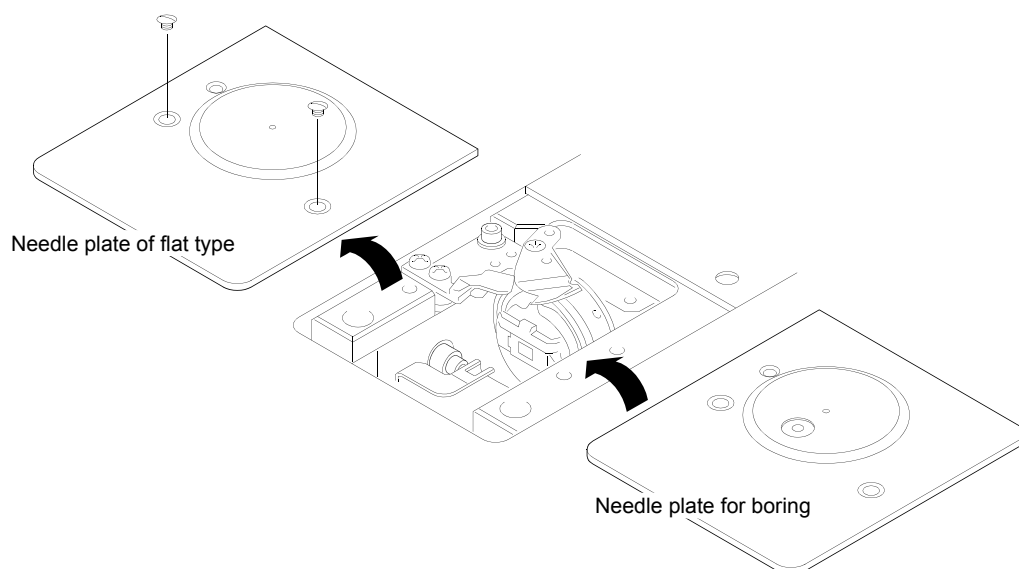


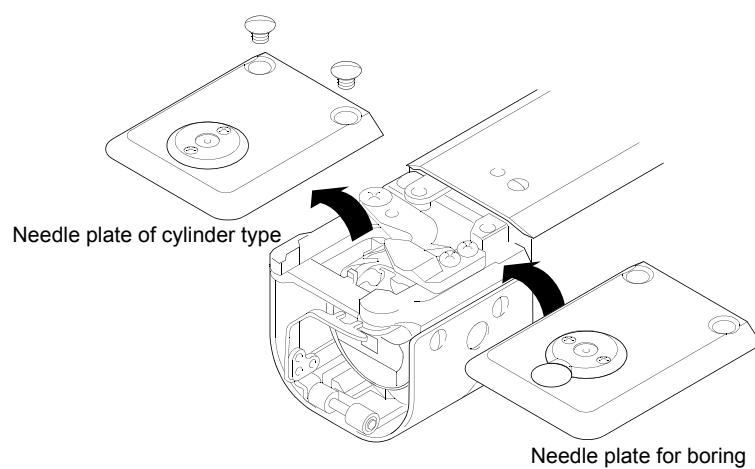
Attaching of boring device

1. Changing of needle plate

1. Detach the needle plate of flat type and replace it with needle plate for boring.

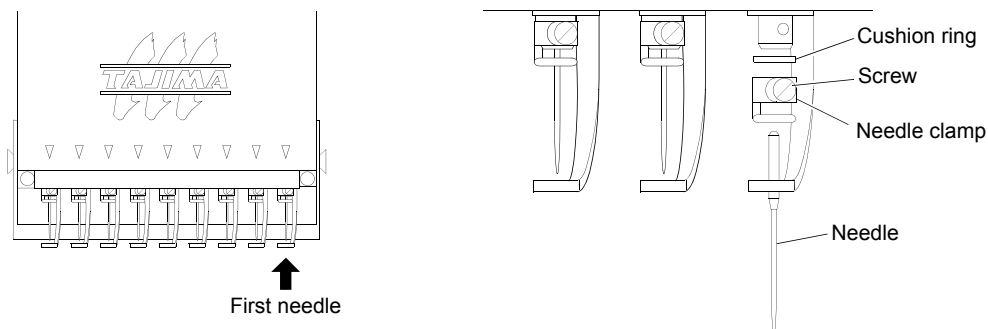



2. Detach the needle plate of cylinder type and replace it with needle plate for boring.



2. Attaching of boring device

1. Loosen the screw of the needle clamp of the first needle to detach the needle clamp and needle.

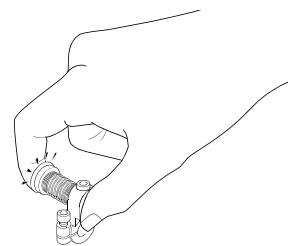


 When you detach the needle clamp, the cushion ring may also come off. However, do not take off the cushion ring.

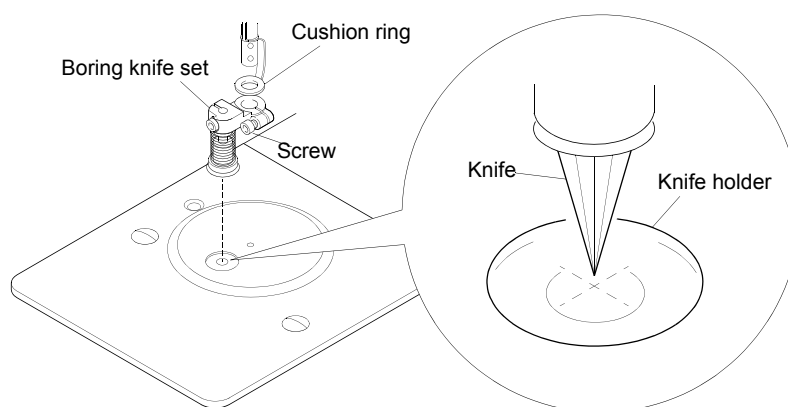


CAUTION

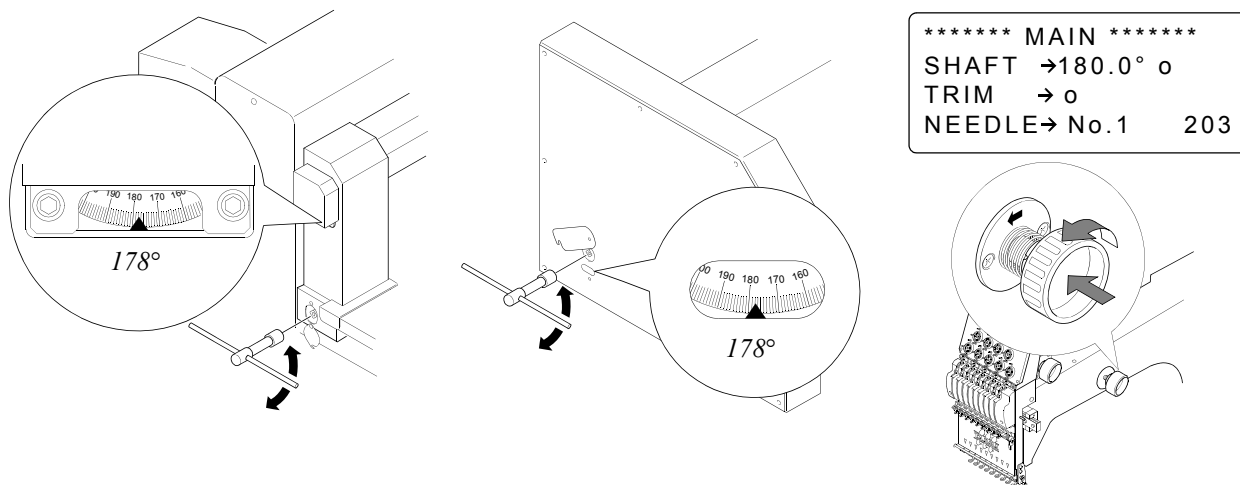
- !** Pay attention to handling of boring knife set. If you have it as shown in the right illustration, you could be injured by sticking of the knife to your finger.



2. Set the boring knife set to the needle bar so that the tip of the knife comes to the center of the knife holder, and tighten the screw temporarily. Use the cushion ring attached to the needle bar as it is.

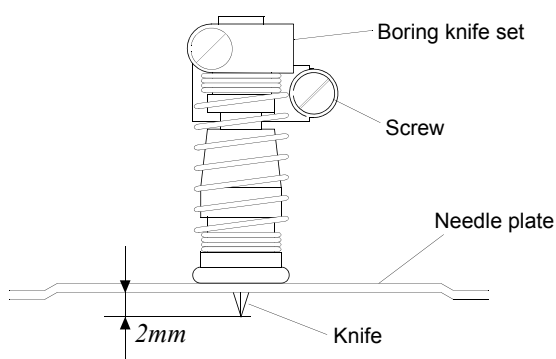


3. Turn the main shaft by hand so that the needle bar comes to the lowest position (178°).

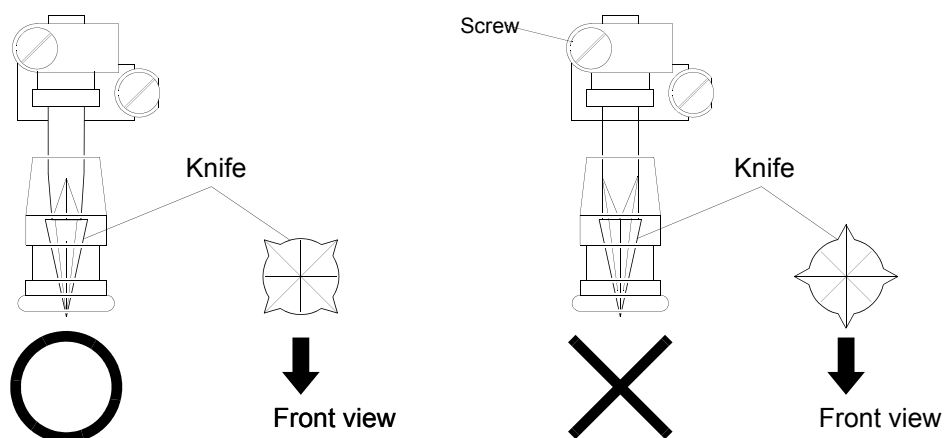


In case of TEJTII-C, turn on the power and check the main shaft angle (180°) using test mode of the operation panel while turning the main shaft handle by hand. For details, please refer to the user's manual of the machine.

4. Adjust height of the boring knife set so that the tip of the knife comes out from the needle plate by 2 mm, and fix the boring knife set using the screw.



5. The knife is attached to the machine so that its groove section faces to the front. If the groove section does not face to the front, loosen the screw to correct aspect of the knife.



When you perform boring embroidery, it is necessary to change setting of the DIP switch and/or parameter of the machine (The contents of setting differ depending on machine).
Regarding setting contents, refer to the user's manual of the embroidery machine.